



Welcome to your weekly overview of Rates, Surcharges, Service news and Operational Updates

Dear Customer,

Thanks for subscribing to our **CustomerNEWS**. This and every week, we share with you the latest **rates, surcharges, service news** and **operational updates** that have been published on our website. In case you're looking for previously published information, remember to visit and bookmark our [CustomerNEWS](#). If you're interested in purely operational information, like congestions, port information and more, head over to our [Operational Updates](#) where you'll find the latest developments.

Here's a recap of the recent updates that you might have missed:

[Here's an update for Waste Electrical and Electronic Equipment \(WEEE\) shipments](#)



If you're shipping Waste Electrical and Electronic Equipment (WEEE) or e-waste, here's an update that might impact your cargo planning. Starting this January, you will need to present a transboundary movement approval from the concerned environmental protection agencies. This will apply for export, import, and transit moves as stated in the Basel Convention common rules.

[Learn more](#)



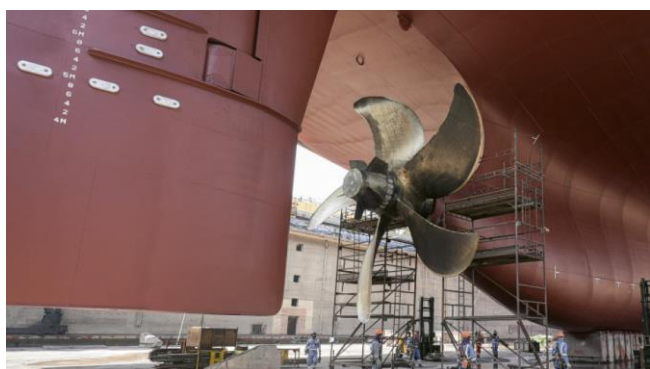
[Here's a WDS WID Surcharge to the U.S. East Coast and Gulf Ports](#)

We are introducing a Work Disruption Surcharge (WDS) and Work Interruption Destination Surcharge (WID), effective January 20, 2025, in the event of a strike.

[WDS WID surcharge](#)

[Shipping from Middle East & the Indian Subcontinent to North America? A GRI/GRA is coming up](#)

A General Rate Increase (GRI)/General Rate Adjustment (GRA) from Indian Subcontinent & Middle East to North America is coming up.



[GRI/GRA Middle East & ISC](#)

[Here are updates on our Asia feeders](#)



Thinking of your cargo planning we have worked on expanding our network coverage within Asia. Here's an update of the upcoming service enhancements and changes within our feeder services in Asia.

[CPF, JKF, SS1, TWX updates](#)

[VIS, VCS and JPX updates](#)



[Here's what you need to know about the IMDG Code, 2024 Edition](#)

If you are shipping Dangerous Goods, here's an important update for your cargo planning.

[IMDG Code update](#)

If you have questions concerning the above changes, please contact our teams at your preferred [location](#), who will be happy to guide you based on your individual situation.

We hope you've had a great start to 2025 and would like to thank you for being a valued customer of Hapag-Lloyd.

Best regards,



Maria-Fernanda

from our Customer Communications Team